

# inmedius DITASTORM™ v2.1 Feature Enhancements

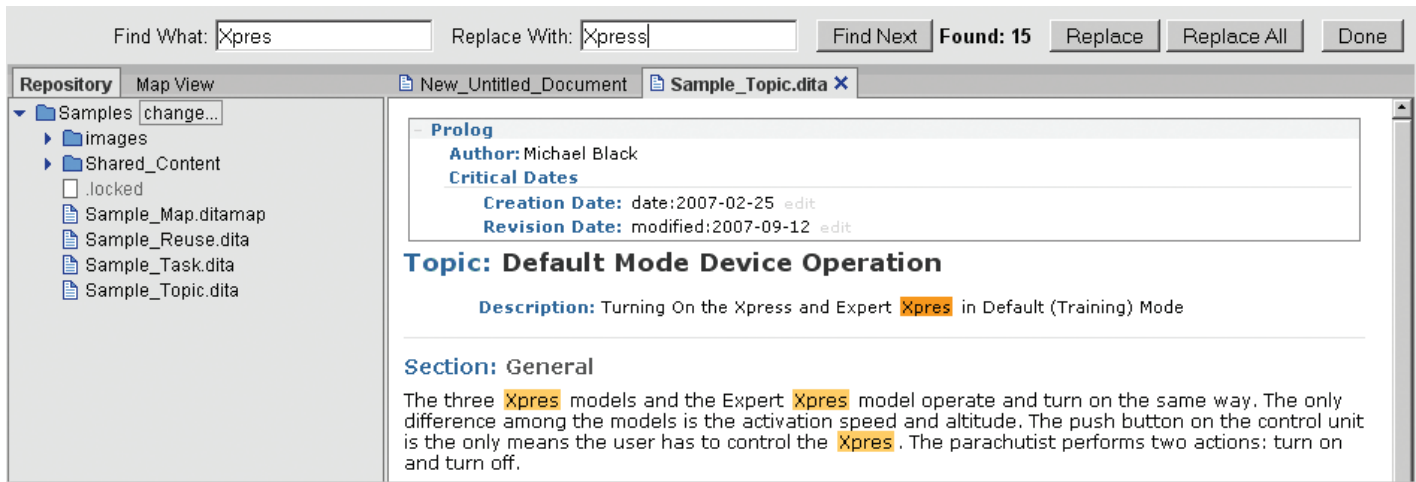


## Enhancements Improve User Interface, Ease of Use, and System Performance

**DITA Storm v2.1** includes new features and enhancements to both **Developer** and **Desktop** software modules to create, manage and publish DITA-compliant documentation in WYSIWYG mode. Included in the December 2008 release are features and enhancements requested by our valued clients to both **Developer** and **Desktop** software modules. This document highlights, illustrates and briefly describes those additions.

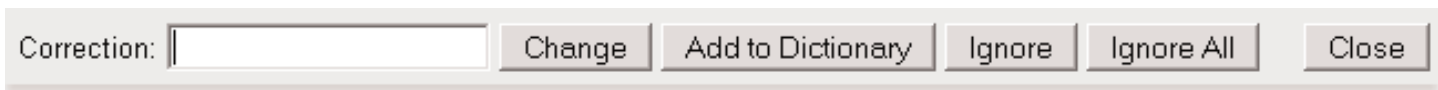
### Find/Replace Function

By clicking on the 'Search & Replace' button on the toolbar, users can locate a specified string in the document and perform single-entry or a global replace operation.



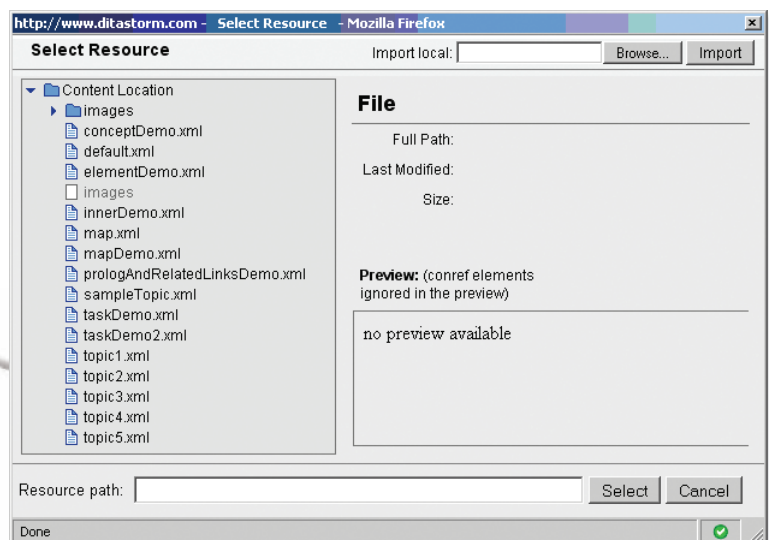
### Configurable User Dictionary

**DITA Storm Desktop** now allows users to add commonly used vocabulary to a list of 'valid' tokens for future spell-checking operations. For **DITA Storm Developer** a similar feature provides the ability to extend the standard editor dictionary to include some of the words specific to an organization or publishing environment. They can be configured per-server and are available for all users of **DITA Storm Developer**.



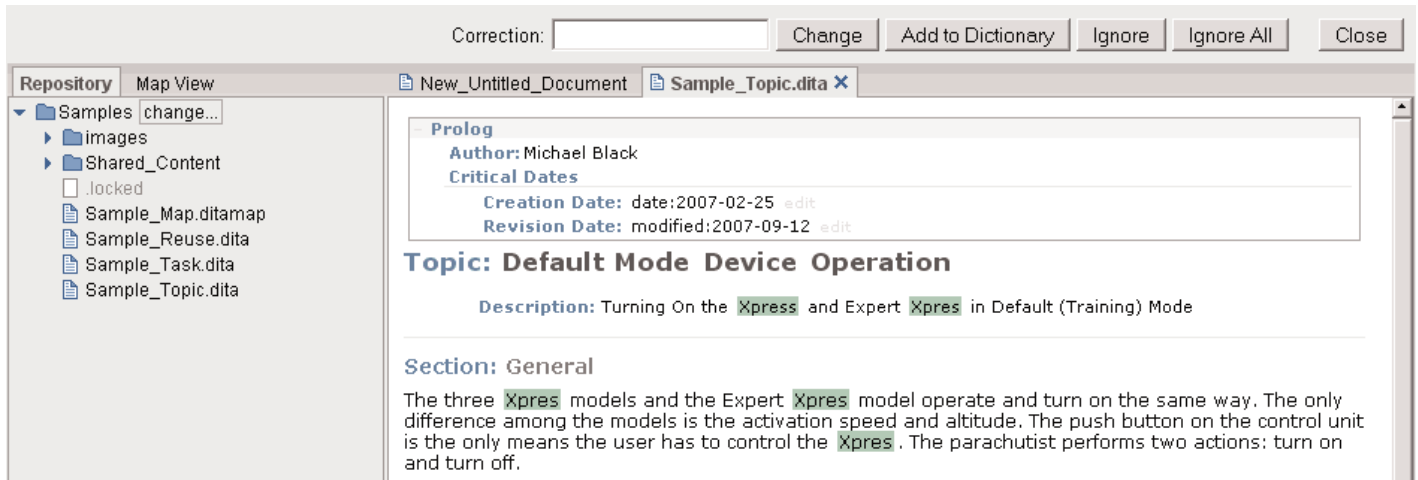
### Import Documents to Repository

Browser-integrated **DITA Storm Developer** now provides an additional backend repository upload support. Integrated into content management systems, Developer aids in situations when images or other local resources need to be uploaded to the server, and linked from specified content.



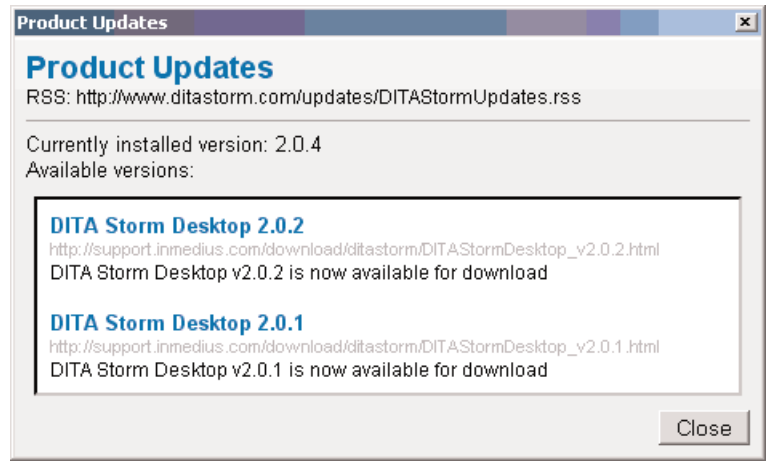
## 'Ignore All' Added to Spell Check

Standard spell-checking functionality provides users with the ability to ignore all occurrences of current spelling error in the open document.



## New Product Update View

DITA Storm Desktop users can access the Product Update screen which displays the current software version and lists earlier versions available from the Inmedius Website.



## Other Enhancements

- The DITA Storm Editor allows the inserting of elements before and after the currently selected element, providing users with extended control over the structure of the document.
- Content reuse functionality is now able to provide user with only reusable elements. Therefore, only a valid list of elements will be shown in the current document context.
- When selected/clicked, Desktop software opens DITA maps in both Map and Editing panels simultaneously, providing the ability to directly go to the map authoring.
- DITA Storm Developer now provides a more structured and clear integration API. Editor integrators now need to implement simple JavaScript interface providing access to the functionality of the backend server. A typical integration scenario only requires implementation of five backend communication methods.
- New versions of both DITA Storm Developer and Desktop include enhanced XSL rendering style sheets.

*This document is for information purposes only and is subject to change without notice. Content is current as of December, 2008. Inmedius disclaims all warranties of any kind, either expressed or implied.*

*Inmedius and the Inmedius logo are registered trademarks, and the Inmedius DITA Storm name and logo are trademarks of Inmedius, Inc. All other company names, products, and trademarks are the property of their respective holders. Companies mentioned do not imply endorsement.*

*Inmedius DITA Storm v2.1 Highlights Sheet © Copyright 2008. Inmedius, Inc. All rights reserved.*